



**The Long Island Divers
Association,
Life Support Technologies Inc., &
Nassau University Medical Center
proudly present,**

**Our Local Dive Boat Captains Share
An Introduction, History, and Stories of
“Diving Long Island’s Best Inshore Wrecks”**

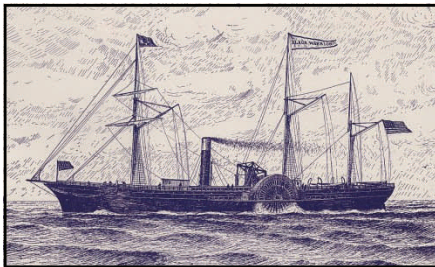


**Thursday
June 12, 2008
8:00PM
at the NUMC
Amphitheater**

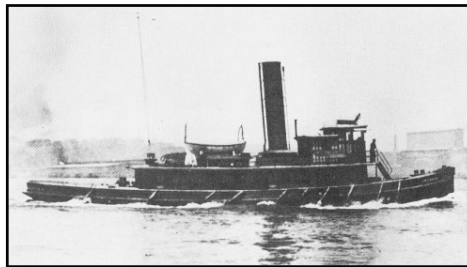
Directions: Wantagh Parkway to Hempstead Turnpike West or Meadowbrook Parkway to Hempstead Turnpike East. Nassau University Medical Center is halfway between the Wantagh and Meadowbrook Parkways, on the North side of Hempstead Turnpike. Go to the main entrance and ask for the Amphitheater.

For divers new to local shipwreck diving, inshore wrecks are the place to begin. But just because these wrecks are shallow, doesn't make them any less interesting or exciting than any other wrecks. Many have dramatic and colorful histories behind them, and their many years serving as introductory wreck diving training grounds means that they have been the sites of many exciting days of diving with countless interesting stories. Regardless of what you are looking for in wreck diving, there are inshore wrecks that are well suited to fit the bill, from colorful and diverse marine life to artifact ripe hunting grounds. Who better than our dive boat Captains to fill us in on these wrecks?

The Captains will take turns presenting some of their favorite inshore wrecks, along with a description of the particulars of their boat and their diving operations. This is a great opportunity for new and experienced divers alike to hear from the Captains themselves about some of the many easily accessible wreck sites they regularly visit. Our local dive boat Captains are some of the most experienced divers and Captains you will find anywhere. Don't miss this opportunity to get an introduction to local inshore diving from those that make it happen.



Black Warrior



Lizzie D.



Iberia

FREE to Long Island Divers Association members, \$5.00 for all others.

All vehicles parked at the NUMC parking facility are subject to parking fees, currently max \$5.25 to closing.

Space is Limited. Reserve now, while spots are available.

RSVP Required: Please email Adam Altman at diverex@optonline.net

The Long Island Divers Association is a 501(c)(3) not-for-profit corporation.